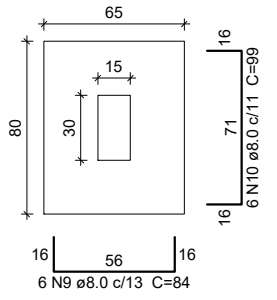
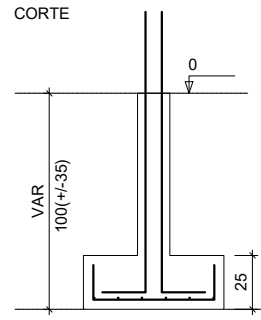


S1=S4=S5=S6=S9=S13  
PLANTA

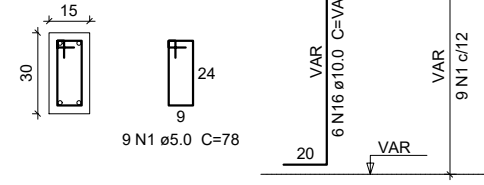


CORTE

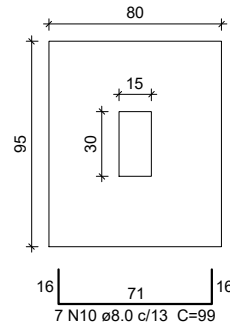


P1=P4=P5=P6=P9=P13

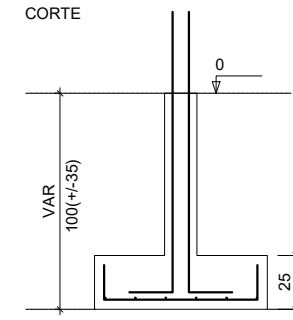
BALDRAME - L1



S2=S3=S7=S8=S10=S11  
PLANTA

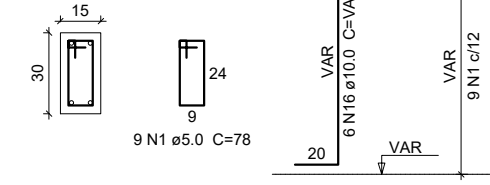


CORTE

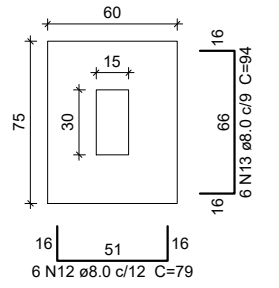


P2=P3=P7=P8=P10=P11

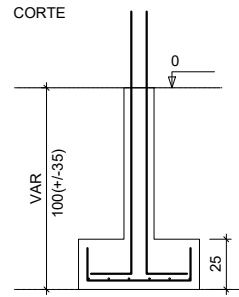
BALDRAME - L1



S12=S14  
PLANTA

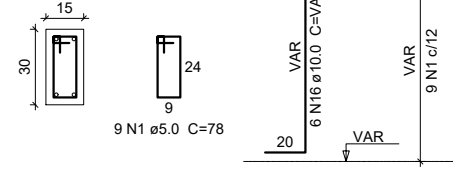


CORTE

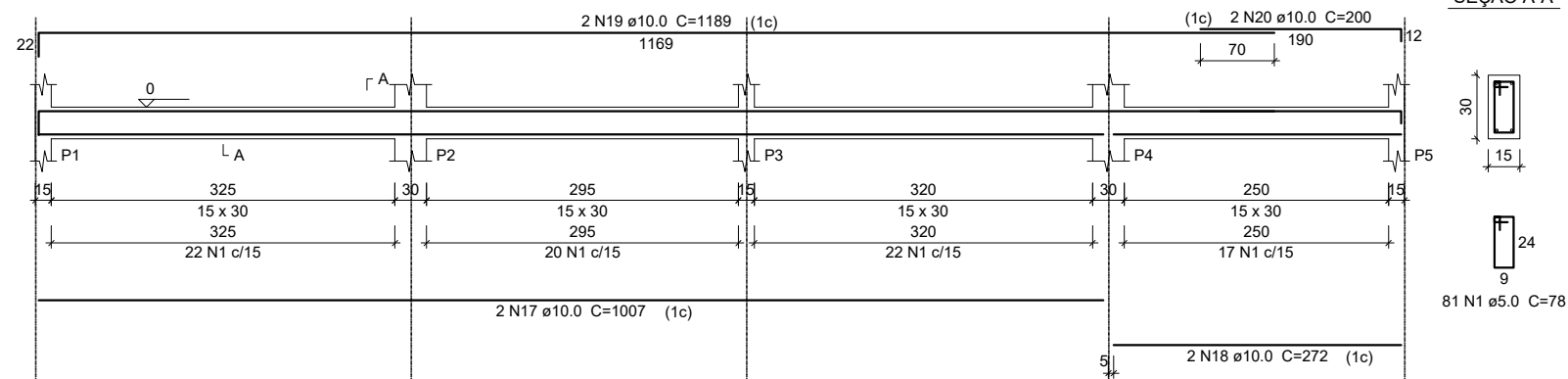


P12=P14

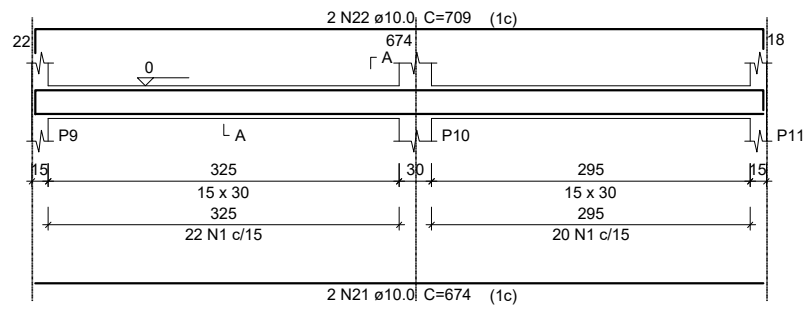
BALDRAME - L1



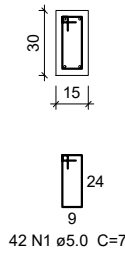
V1



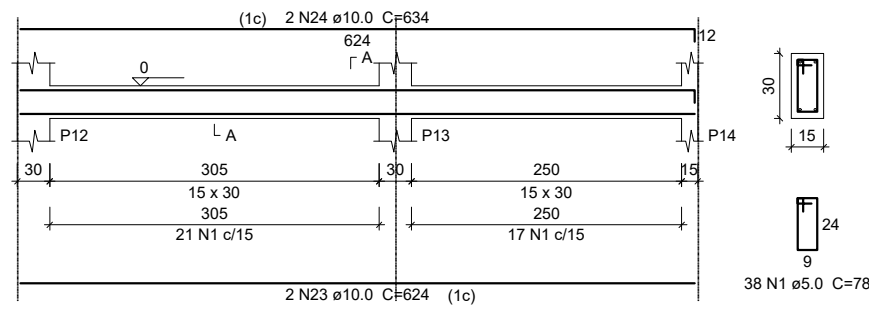
V2



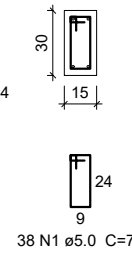
SEÇÃO A-A



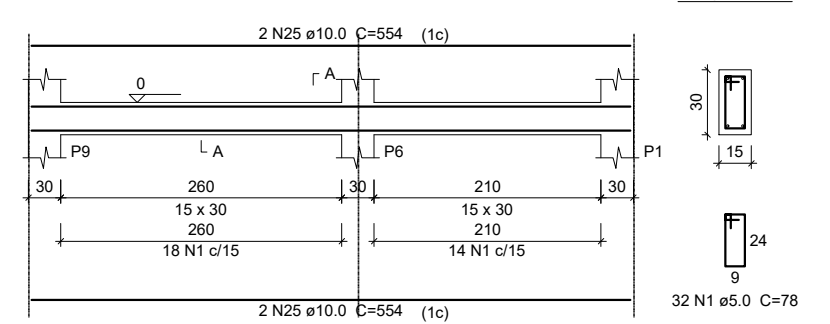
V3



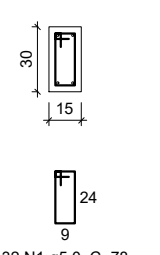
SEÇÃO A-A



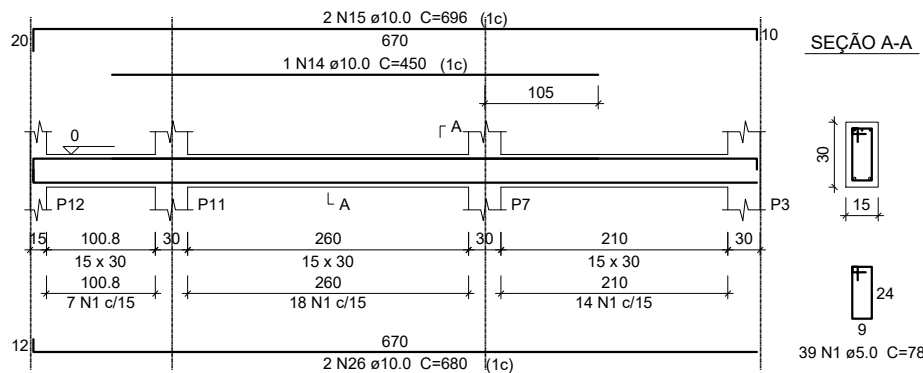
V4



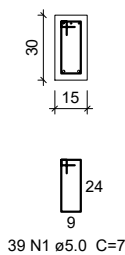
SEÇÃO A-A



V5



SEÇÃO A-A



Proprietário:	Responsável Técnico:
<b>PREFEITURA MUNICIPAL DE GAURAMA</b>	
Secretaria:	<b>SECRETARIA MUNICIPAL DE OBRAS PÚBLICAS</b>
Obra:	<b>AMPLIAÇÃO CRECHE MUNICIPAL CRIANÇA FELIZ</b>
Conteúdo:	<b>PLANTA DE LOCAÇÃO - SAPATAS E VIGAS</b>
Localização do projeto:	<b>RUA PEDRO BEVILAQUA - GAURAMA / RS</b>

Tipo:  
**ESTRUTURAL**  
Escala:  
-  
Área:  
**79,74 m<sup>2</sup>**  
Data:  
**MAIO / 2021**  
Prancha:

**02/10**